

# Overview Research Activities Gola Forest, Sierra Leone

29 – 11 – 2011

Cambridge

# Purpose of meeting

- Short presentation of research activities so far
- Possibilities of exploitation of research
- Deliverables
- Future collaboration

# Research framework

1. First, thorough and rigorous profiling of demographics, socio-economics, attitudes, behaviour of population around GFP
  
2. Assess the impacts of development/conservation programmes
  - Directly related to conservation
    - Conservation behavior
  - Indirectly related to conservation
    - Incomes/poverty
    - Behavior
    - Attitudes
    - Institutions

# Methods

- Qualitative interviews and observations
- Extensive, scientifically sound survey design and implementation
- State of the art behavioral experiment
- Randomised Control Trial
- Random (balanced) sampling
  
- Tailor made protocols

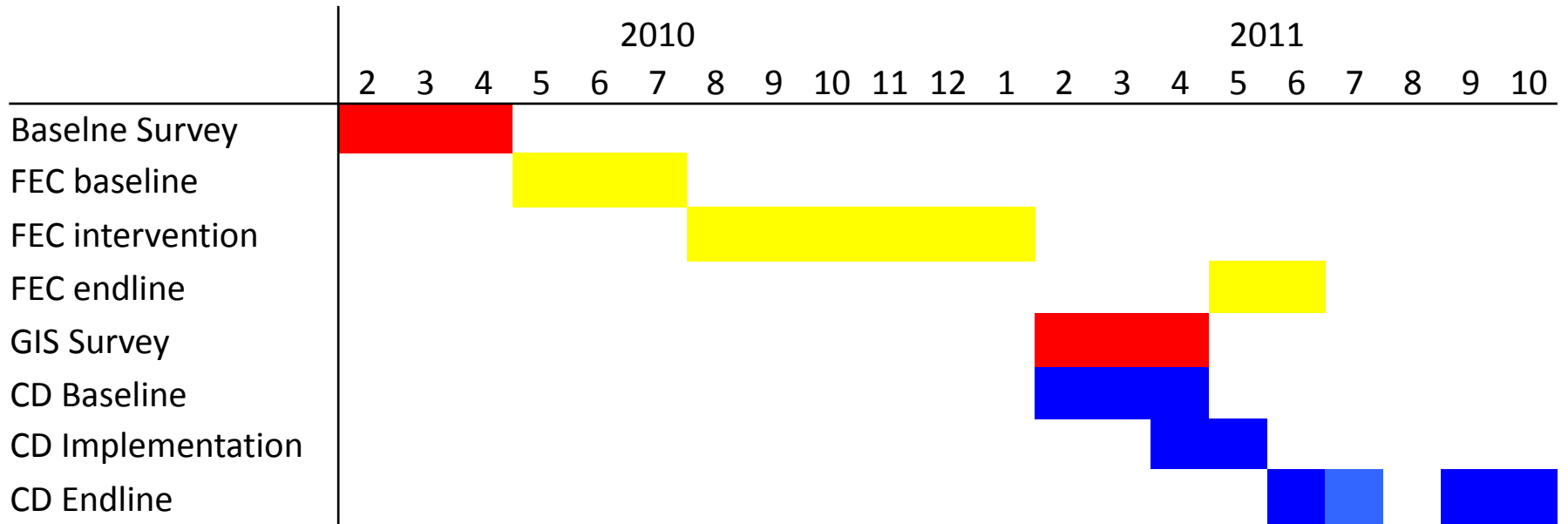
# Implementation

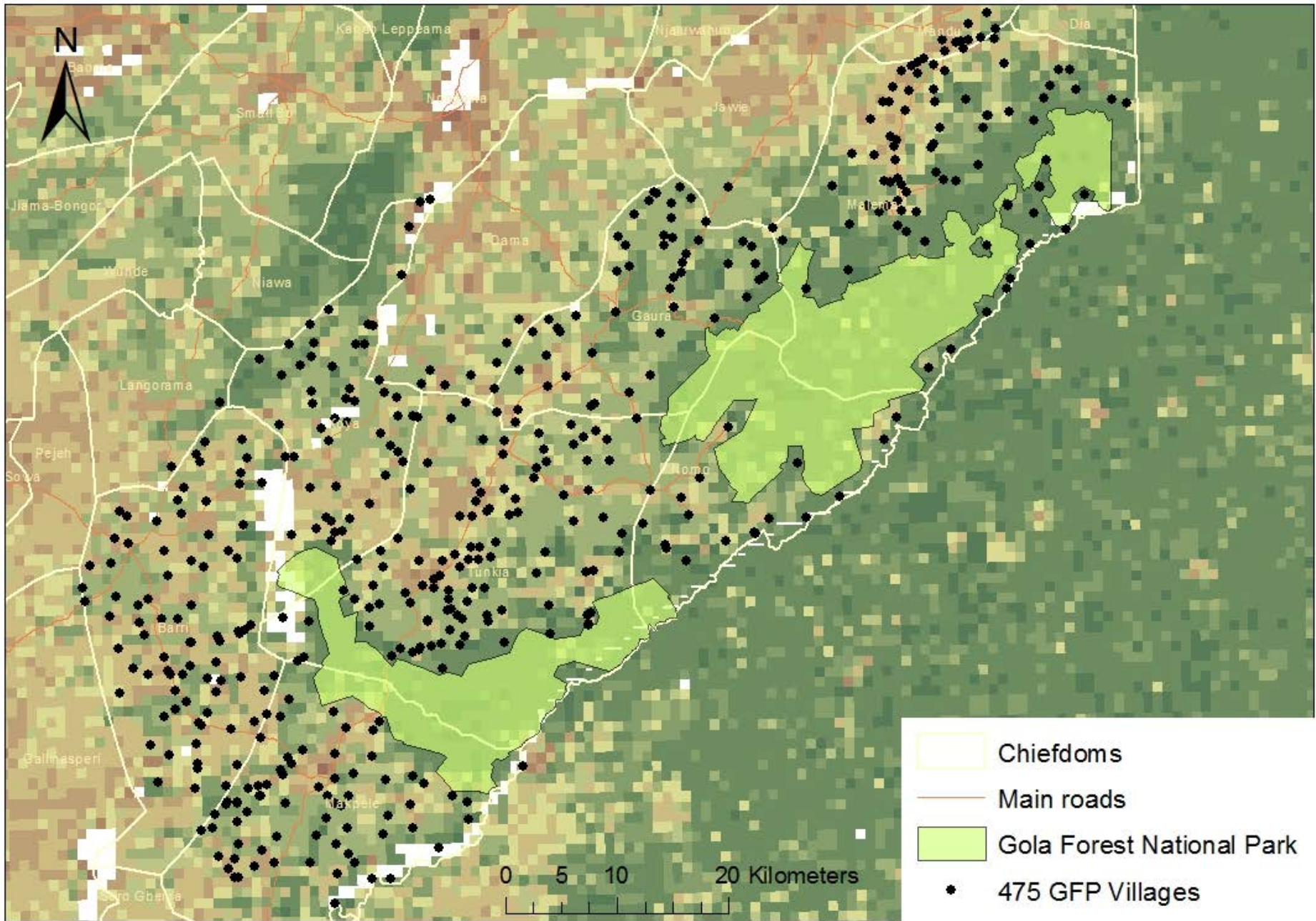
- Collaboration between policy makers and scientists
- Collaboration with multiple disciplines (anthropology, economics, ecology)
- Extensive training and field supervision
- Capacity building of research staff (>60 national research assistance) and GFP staff (multiple training sessions)

## **Main research activities**

- Baseline community and household survey
- Additional community survey land use/GIS
- FEC Livelihood Support Program Evaluation
- Chiefdom Livelihood Development Programme

# Time line





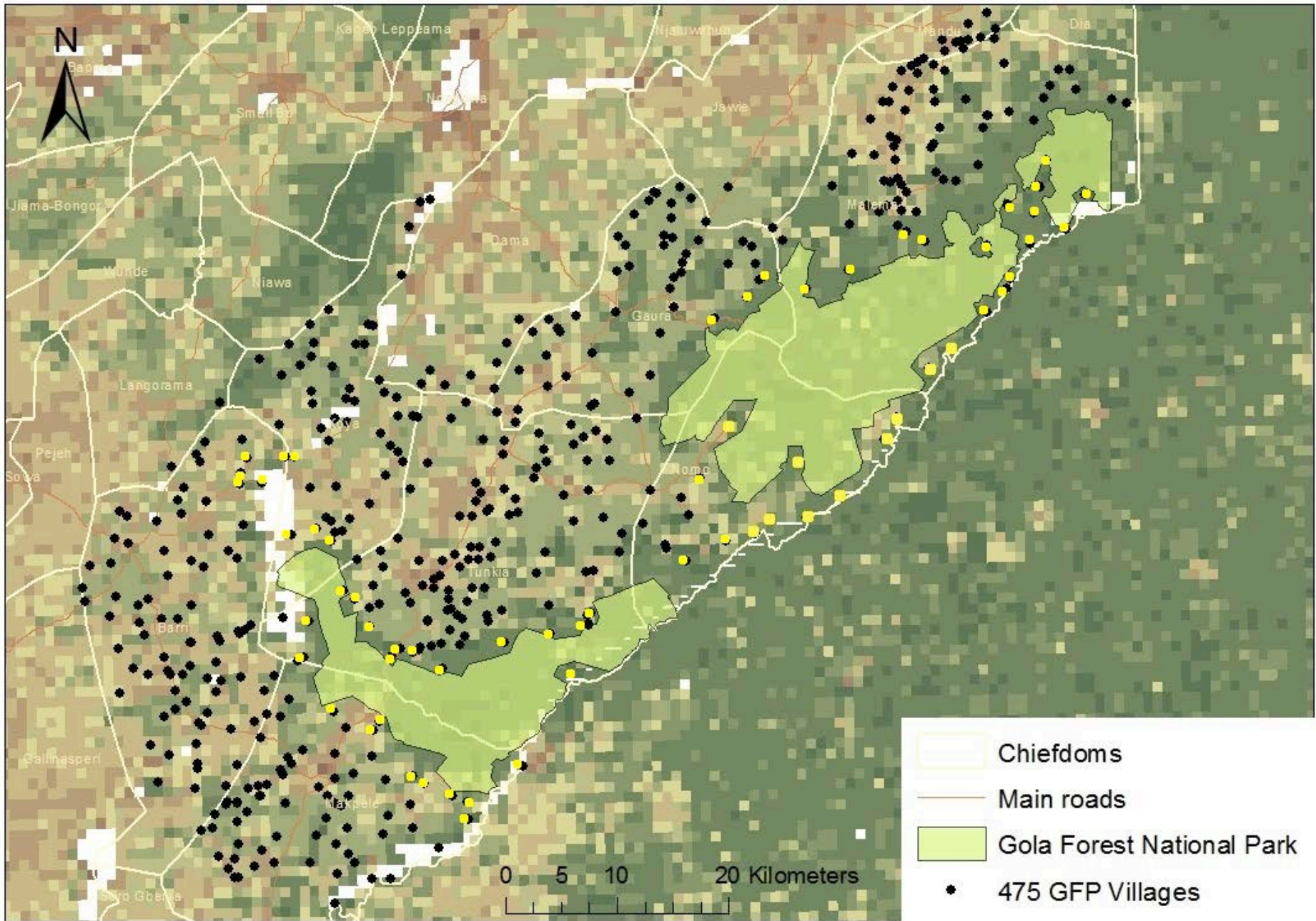


# Baseline community and household survey

- Date: February-April 2010
- 180 villages and 2816 households
- demography, agricultural production, consumption, incomes, expenditures, forest use, historical events (including conflict), local disputes, attitudes towards conservation and GFP, social network variables.

# FEC Livelihood Support Program Evaluation

- FEC Livelihood Development Fund (\$35,000)
- Aim to promote livelihoods and conservation
- FEC = 1 mile, 56 villages
- Equal partition \$625/village
- Livelihood goods (no cash)
- Research aim: explore impacts on livelihoods, social capital, social norms, deliberative decision making processes and conservation attitudes and behaviour



# FEC Livelihood Support Program Evaluation

1. Impact evaluation village project
  - All FEC villages (n=56)
  - Baseline and endline survey/experiments
  - With treatments:
    - Treatment 1: traditional leaders
    - Treatment 2: random committee

# FEC Livelihood Support Program Evaluation

## 2. What determined public good donations?

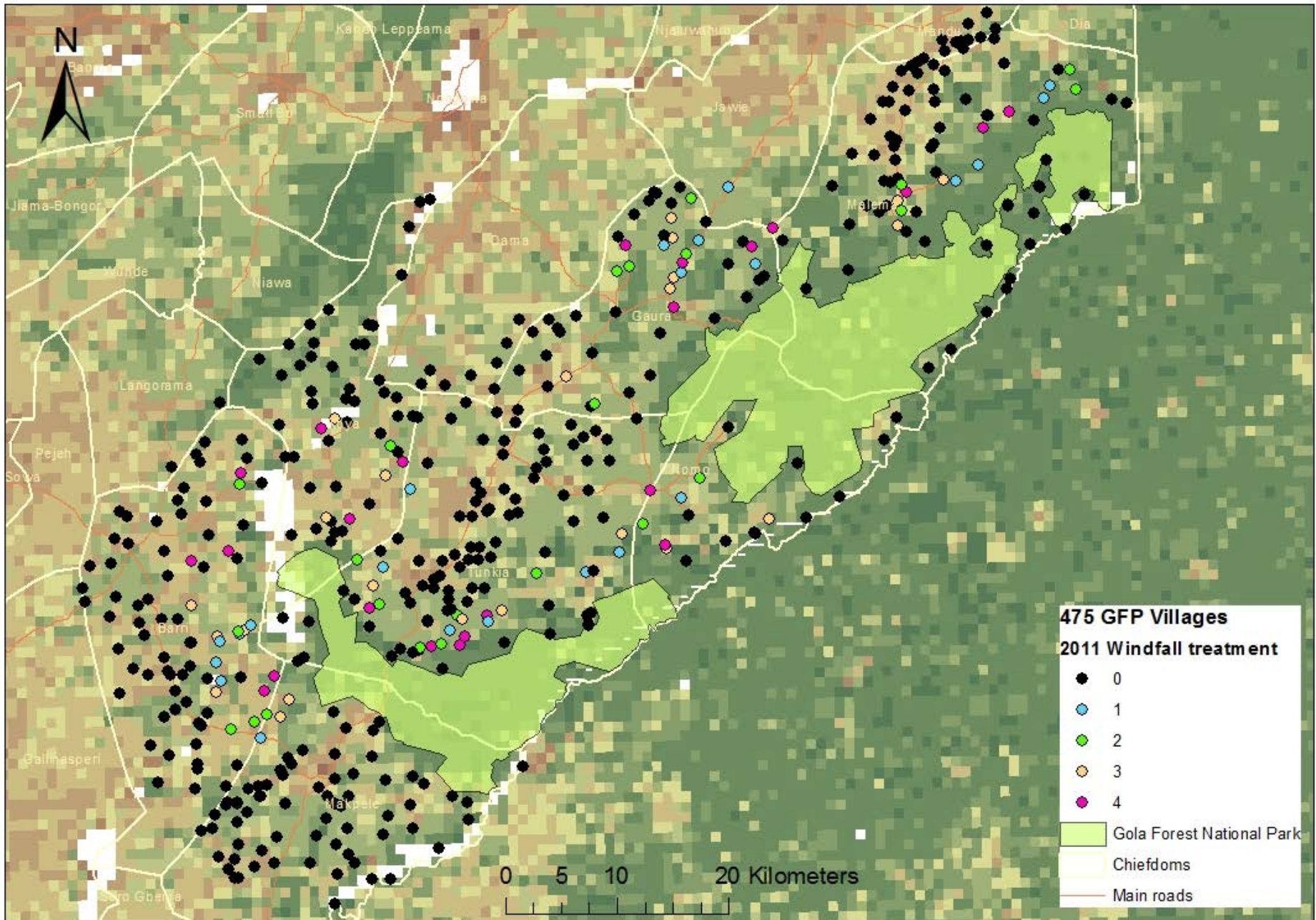
- In small FEC villages (n=25)
- Each HH Le 80.000 (\$20) to allocate
- Private consumption, public good
- Does anonymity matter? Do social relations matter? Do examples of appropriate behavior matter?

# Chieftom Livelihood Development Programme

- Chieftom Development Fund (\$75000)
- Aim to promote livelihoods and conservation
- Research aim: most effective way to build social cohesion and support for conservation
- N=91 (6 chieftoms, non FEC, next x miles out)
- Proportional Le 60.000 (\$15) per HH
- Livelihood goods (no cash)

# Chieftdom Livelihood Development Programme

- Baseline and endline survey/experiments
- With treatments:
  - Treatment 1: unconditional transfer to chief
  - Treatment 2: unconditional transfer to HH
  - Treatment 3: conditional transfer to HH
  - Control





# Output – to – date

- GFP Baseline Report and data and training
- E. Mokuwa, M. Voors, E. Bulte and Paul Richards (2011) Peasant Grievance and Insurgency in Sierra Leone: Judicial Serfdom as a Driver of Conflict, *African Affairs*, 110 (440): 339-366
- M.J. Voors, T. Turley, Erwin Bulte, Andreas Kontoleon, John List (2011) Using Artefactual Field Experiments to Learn About the Incentives for Sustainable Forest Use in Developing Economies, *American Economic Review Papers and Proceedings*, 101(3): 329-333.
- M.J. Voors, T. Turley, Erwin Bulte, Andreas Kontoleon, John List (2011) Exploring Whether Behavior in context-free experiments is predictive of behavior in the field. Evidence from Lab and Field experiments in rural Sierra Leone. *Economics Letters*, in press
- Several working papers

## Other research projects

- Land use change (deforestation, crop choice)
- Market access and behavior
- Health status
- Economic returns to migration
- Witchcraft and behavior
- War and behavior
- Family marriage