

Cambridge Conservation Initiative

transforming science, policy and capacity building for biodiversity



The Cambridge Conservation Initiative is a unique interdisciplinary and multidisciplinary venture, catalysing innovative, collaborative work among departments of the University of Cambridge and nine leading conservation organisations and networks.

CCI integrates excellence in research, policy and practice on biodiversity and ecosystem services, helping to develop capacity and leadership for sustained global environmental benefit.

Photographs: Tropical Biology Association and BirdLife International

Through collaborative programmes CCI partners are:

- Assessing and quantifying the status and values - biological, social and economic - of biodiversity and the natural capital it provides
- Gathering, assimilating and disseminating biodiversity and ecosystem services knowledge and fostering global knowledge networks
- Undertaking interdisciplinary research and analysis to support conservation policy and practice
- Developing novel and innovative conservation solutions and approaches
- Enhancing conservation capacity, learning and leadership
- Integrating biodiversity conservation into the wider needs of society

www.conservation.cam.ac.uk

Cambridge Conservation Initiative

transforming science, policy and capacity building for biodiversity



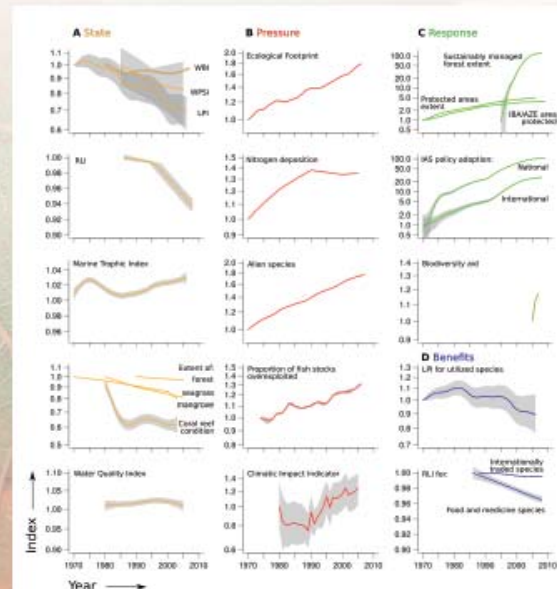
Assessments

Cambridge Conservation Initiative partners are at the cutting edge in assessments of biodiversity and ecosystem services and their interlinkages – producing independent, peer-reviewed outputs of the highest scientific standard.

Examples of CCI partners' collaborative assessment work include:

- Leading the first global assessment of biodiversity trends (Butchart *et al.* (2010) *Science* 328, 1164-1168), compiling linked sets of indicators (Sparks *et al.* (2011) *Oryx* 45, 411-419)
- Using remote-sensing data to track land-cover changes on a large sample of African sites of conservation importance and their buffer zones, stratified by protection status and habitat type
- CCI partners are uniquely placed to support the synthesis of global, regional, and as necessary sub-regional and national information, on species, sites and ecosystem services, and thematic issues

Assessing trends in global biodiversity



From Butchart *et al.* (2010) *Science* 328, 1164-1168. Reprinted with permission from AAAAS.

Photograph by Jacqueline Garget (www.jacquelinegarget.co.uk)

www.conservation.cam.ac.uk

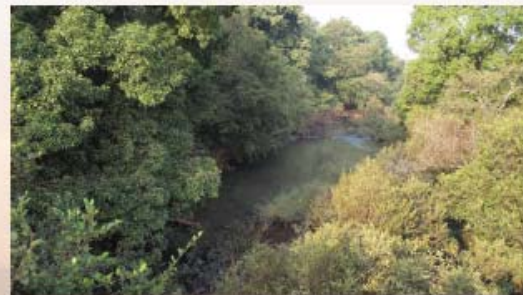
Cambridge Conservation Initiative

transforming science, policy and capacity building for biodiversity



Knowledge generation

Cambridge Conservation Initiative partners are working together to fill fundamental knowledge gaps and to provide new tools for generating policy-relevant information. They share a commitment to improving the scope, quality and accessibility of all types of data, information and knowledge on biodiversity and ecosystem services.



For example, CCI partners are collaborating across disciplines to:

- Develop and test integrated methods for assessing emissions reductions from REDD projects, and perform sensitivity analyses to explore the merits of alternative approaches
- Assess the costs of conservation interventions needed to deliver two key targets of the Convention on Biological Diversity's Strategic Plan by 2020: protecting sites (Target 11) and preventing extinctions (Target 12)
- Measure the impacts of forest conservation initiatives on local livelihoods



Photographs: Bhaskar Vira, Department of Geography, University of Cambridge

www.conservation.cam.ac.uk

Cambridge Conservation Initiative

transforming science, policy and capacity building for biodiversity



Capacity building

Cambridge Conservation Initiative partners are working in innovative ways to build capacity in biodiversity, ecosystem services and their interactions.

Examples of CCI collaborations include:

- An inter-disciplinary project developing tools and training for understanding the links between biodiversity conservation, ecosystem services and climate change at the national level. See: www.conservation.cam.ac.uk/collaborative-fund
- An MPhil degree programme in Conservation Leadership: a unique collaboration between the University of Cambridge and all CCI partners, which is building capacity among individuals from biodiversity-rich countries to work effectively at the science-policy interface in biodiversity and ecosystem services. See: www.geog.cam.ac.uk/graduate/mphil/conservation
- Building a practical toolkit to measure and monitor ecosystem services.



Photograph: Tropical Biology Association



Photograph: Nigel Lecker-Williams

www.conservation.cam.ac.uk

Cambridge Conservation Initiative

transforming science, policy and capacity building for biodiversity



Photo: gift by scientist for nature

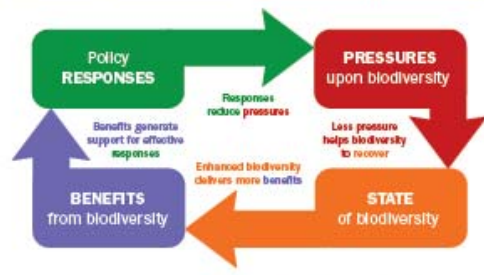
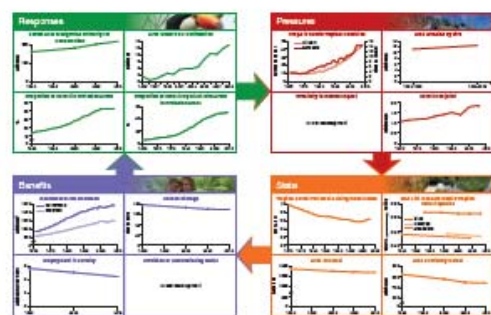
Policy support

CCI partners are working across disciplines to support policy, bringing together wide expertise in research and practice to develop tools and methodologies.

Examples of CCI collaborations include:

- The CCI Conservation Futures Programme coordinates horizon scanning for important new issues that deserve policy attention, and focuses collaborative work on practical solutions to emerging conservation challenges (Sutherland *et al.* 2011, *Trends Ecol Evol* 26:10-16).
- Indicators are a key tool for policy application. Collaborative CCI work demonstrates how policy can be guided better through linked sets of indicators, which clearly show how policy interventions impact on threats, the status of biodiversity and the benefits and services that biodiversity provides to people (Sparks *et al.* 2011, *Oryx* 45: 411-419).

Identifying linked indicators



Sparks *et al.* 2011, *Oryx* 45: 411-419

www.conservation.cam.ac.uk